

# Recombinant Human IL-15 Protein

Catalog Number: EXRP012



For Research Use Only. Not Intended for Diagnostic or Therapeutic Use.

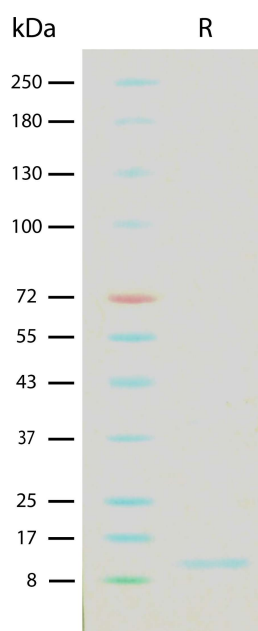
## Product Details

Biological Activity	Determined by a cell proliferation assay using mouse CTLL-2 cells. The ED <sub>50</sub> for this effect is typically <0.5 ng/mL.
Purity	>95% by SDS-PAGE and quantitative densitometry by Coomassie® Blue staining
Endotoxin	<0.05 EU per 1 µg of the protein as determined by the LAL method
Source	Expressed in <i>E. coli</i>
Accession Number	P40933
Sequence	Asn49-Ser162, with an N-terminal Met MNWVNVISDL KKIEDLIQSM HIDATLYTES DVHPSCKVTA MKCFLELQV ISLES GDASI HDTVENLIIL ANNSLSSNGN VTESGCKECE ELEEKNIKEF LQSFVHIVQM FINTS
Molecular Weight	12.9 kDa (predicted)
Formulation	Lyophilized from sterile PBS with Trehalose, pH 7.4

## Storage and Preparation

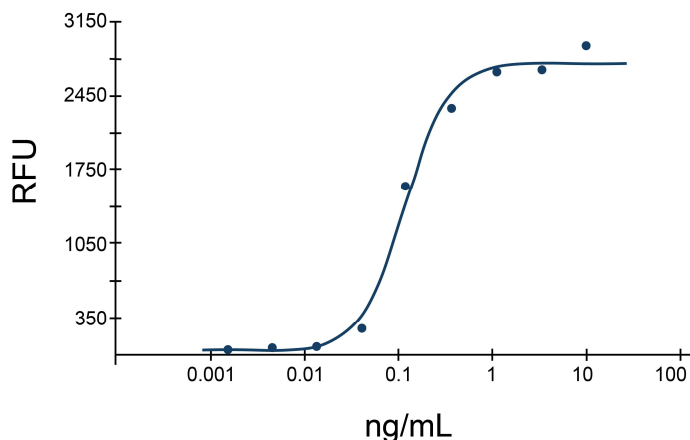
Shipping	Shipped at ambient temperature.
Stability and Storage	<ul style="list-style-type: none"><li>12 months from date of receipt at -20°C to -70°C, <b>lyophilized powder</b>.</li><li>3 months at -20°C to -70°C under sterile conditions <b>after reconstitution</b>.</li></ul> <b>Avoid repeated freeze-thaw cycles.</b>
Reconstitution	Reconstitute at 100 µg/mL in sterile PBS.

## Data Images



Recombinant Human IL-15 (2 µg/lane) on SDS-PAGE under reducing (R) conditions. The gel was stained using Coomassie® Blue showing a single band at 13 kDa and purity greater than 95%.

## Recombinant Human IL-15



Determined by a cell proliferation assay using mouse CTLL-2 cells. The ED<sub>50</sub> for this effect is typically <0.5 ng/mL.