

Recombinant Human M-CSF/CSF1 Protein

Catalog Number: EXRP018

EXREprotein™

More information: info@exreprotein.com

For Research Use Only. Not Intended for Diagnostic or Therapeutic Use.

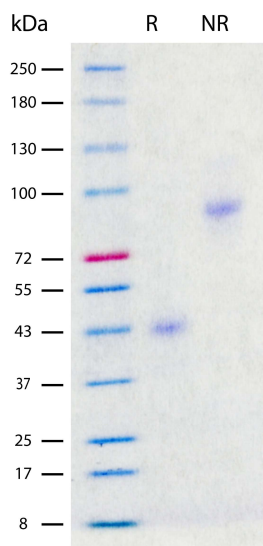
Product Details

Biological Activity	Determined by a cell proliferation assay using mouse M-NFS-60 cells. The ED ₅₀ for this effect is typically 2-5 ng/mL.
Purity	>97% by SDS-PAGE and quantitative densitometry by Coomassie® Blue staining
Endotoxin	<0.02 EU per 1 µg of the protein as determined by the LAL method
Source	Expressed in CHO cells. Disulfide-linked homodimer
Accession Number	P09603
Sequence	Glu33-Arg255 EEVSEYCSHM IGSGHLQSLQ RLIDSQMETS CQITFEFVDQ EQLKDPVCYL KKAFLLVQDI MEDTMRFRDN TPNAIAIVQL QELSLRLKSC FTKDYEEHDK ACVRTFYETP LQLEKVKNV FNETKNLLDK DWNIFSKNCN NSFAECSSQD VTKPDCNCL YPKAIPSSDP ASVSPHQPLA PSMAPVAGLT WEDSEGTEGS SLLPGEQLPH TVDPGSAKQR PPR
Molecular Weight	25.1 kDa (monomer, predicted), 43 kDa and 86 kDa (glycosylated, observed on SDS-PAGE gel stained using Coomassie® Blue under reducing and non-reducing conditions, respectively)
Formulation	Lyophilized from sterile PBS with Trehalose, pH7.4

Storage and Preparation

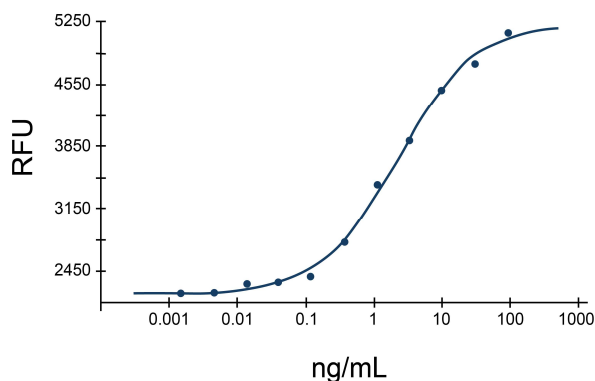
Shipping	Shipped at ambient temperature.
Stability and Storage	<ul style="list-style-type: none">12 months from date of receipt at -20°C to -70°C, lyophilized powder.3 months at -20°C to -70°C under sterile conditions after reconstitution. Avoid repeated freeze-thaw cycles.
Reconstitution	Reconstitute at 100 µg/mL in PBS.

Data Images



SDS-PAGE Data, Recombinant Human M-CSF
Recombinant Human M-CSF (2 µg/lane) on SDS-PAGE under reducing (R) and non-reducing (NR) conditions. The gel was stained using Coomassie® Blue showing single bands at 43 kDa and 86 kDa, respectively, and purity greater than 97%.

Recombinant Human M-CSF



Determined by a cell proliferation assay using mouse M-NFS-60 cells. The ED₅₀ for this effect is typically 2-5 ng/mL.