

Recombinant Human GDNF Protein

Catalog Number: EXRP036

EXREprotein™

More information: info@exreprotein.com

For Research Use Only. Not Intended for Diagnostic or Therapeutic Use.

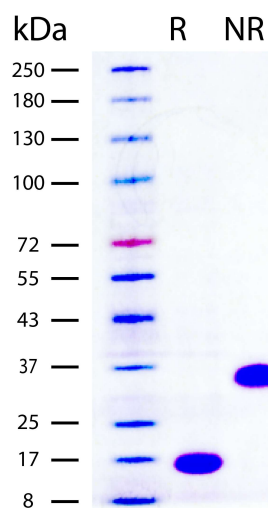
Product Details

Biological Activity	Determined by a cell proliferation assay using human neuroblastoma cells. The ED ₅₀ for this effect is typically <20 ng/mL.
Purity	>96% by SDS-PAGE and quantitative densitometry by Coomassie® Blue staining
Endotoxin	<0.05 EU per 1 µg of the protein as determined by the LAL method
Source	Expressed in CHO cells. Disulfide-linked homodimer
Accession Number	P39905
Sequence	Arg109-Ile211 RGQRGKNRGC VLTAIHLNVT DLGLGYETKE ELIFRYCSGS CDAAETTYDK ILKNLSRNRR LVSDKVGQAC CRPIAFDDDL SFLDDNLVYH ILRKHS AKRC GCI
Molecular Weight	11.6 kDa (monomer, predicted), 16 kDa and 32 kDa (glycosylated, observed on SDS-PAGE gel stained using Coomassie® Blue under reducing and non-reducing conditions, respectively)
Formulation	Lyophilized from sterile PBS with Trehalose, pH 7.4

Storage and Preparation

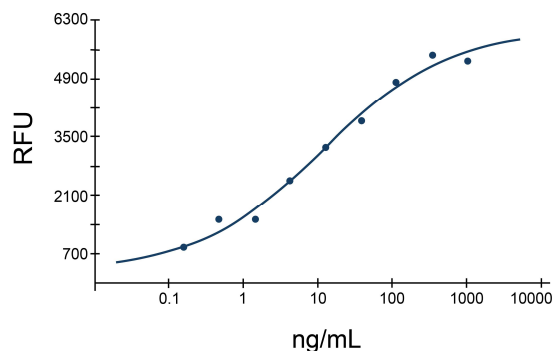
Shipping	Shipped at ambient temperature.
Stability and Storage	<ul style="list-style-type: none">12 months from date of receipt at -20°C to -70°C, lyophilized powder.3 months at -20°C to -70°C under sterile conditions after reconstitution. Avoid repeated freeze-thaw cycles.
Reconstitution	Reconstitute at 100 µg/mL in PBS.

Data Images



Recombinant Human GDNF (2 µg/lane) on SDS-PAGE under reducing (R) and non-reducing (NR) conditions. The gel was stained using Coomassie® Blue showing single bands at 16 kDa and 32 kDa, respectively, and purity greater than 96%.

Recombinant Human GDNF



Determined by a cell proliferation assay using human neuroblastoma cells. The ED₅₀ for this effect is typically <20 ng/mL.