

# Recombinant Human G-CSF Protein

Catalog Number: EXRP069

**EXREprotein™**

More information: [info@exreprotein.com](mailto:info@exreprotein.com)

For Research Use Only. Not Intended for Diagnostic or Therapeutic Use.

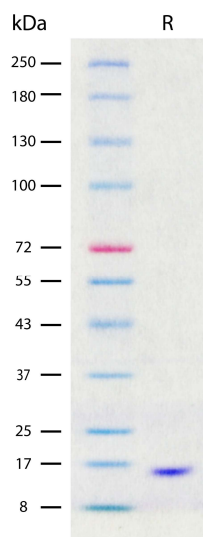
## Product Details

<b>Biological Activity</b>	Determined by a cell proliferation assay using mouse M-NFS-60 cells. The ED <sub>50</sub> for this effect is typically 10-50 pg/mL.
<b>Purity</b>	>97% by SDS-PAGE and quantitative densitometry by Coomassie® Blue staining
<b>Endotoxin</b>	<0.02 EU per 1 µg of the protein as determined by the LAL method
<b>Source</b>	Expressed in <i>E. coli</i>
<b>Accession Number</b>	NP_757373.1
<b>Sequence</b>	Thr31-Pro204  TPLGPASSLP QSFLLKCLEQ VRKIQGDGAA LQEKLCATYK LCHPEELVLL GHSLGIPWAP LSSCPSQALQ LAGCLS QLHS GLFLYQG LLLQ ALEGISPELG PTLDTLQLDV ADFATTIWQQ MEELGMAPAL QPTQGAMPAF ASAFQRRAGG VLVASHLQSF LEVSYRVL RH LAQP
<b>Molecular Weight</b>	18.7 kDa (monomer, predicted)
<b>Formulation</b>	Lyophilized from sterile Sodium Acetate and Sodium Chloride with Trehalose.

## Storage and Preparation

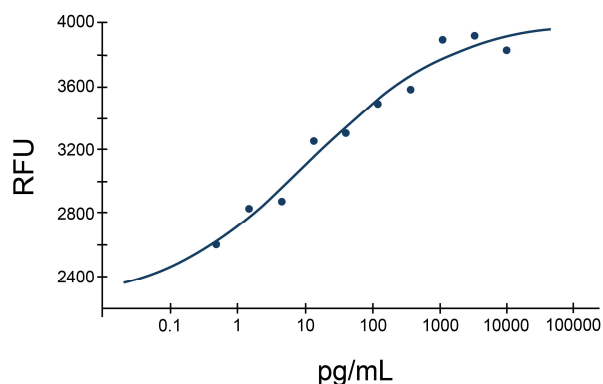
<b>Shipping</b>	Shipped at ambient temperature.
<b>Stability and Storage</b>	<ul style="list-style-type: none"><li>12 months from date of receipt at -20°C to -70°C, <b>lyophilized powder</b>.</li><li>3 months at -20°C to -70°C under sterile conditions <b>after reconstitution</b>.</li></ul> <b>Avoid repeated freeze-thaw cycles.</b>
<b>Reconstitution</b>	Reconstitute at 100 µg/mL in PBS.

## Data Images



Recombinant Human G-CSF (2 µg/lane) on SDS-PAGE under reducing (R) conditions. The gel was stained using Coomassie® Blue showing a single band at approximately 17 kDa and purity greater than 97%.

## Recombinant Human G-CSF



Determined by a cell proliferation assay using mouse M-NFS-60 cells. The ED<sub>50</sub> for this effect is typically 10-50 pg/mL.