

Recombinant Human GDF-15 Protein

Catalog Number: EXRP070

EXREprotein™

More information: info@exreprotein.com

For Research Use Only. Not Intended for Diagnostic or Therapeutic Use.

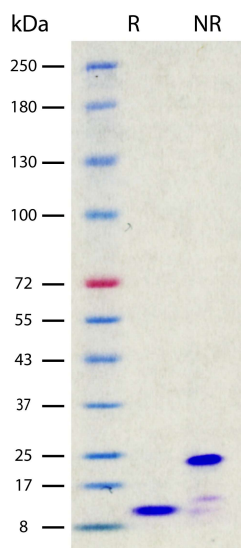
Product Details

Biological Activity	Determined by an alkaline phosphatase activity inhibition assay using mouse MC3T3-E1 cells. The ED ₅₀ for this effect is typically <2 ng/mL.
Purity	>98% under reducing conditions by SDS-PAGE and quantitative densitometry by Coomassie® Blue staining
Endotoxin	<0.05 EU per 1 µg of the protein as determined by the LAL method
Source	Expressed in CHO cells. Disulfide-linked homodimer.
Accession Number	Q99988
Sequence	Ala195-Ile308 ARARNGDHCP LGPGRCCRLH TVRASLEDLG WADWVLSPRE VQVTMCIGAC PSQFRAANMH AQIKTSLHRL KPDTVPAPCC VPASYNPMVL IQKTDGTGVS QTYDDLLAKD CHCI
Molecular Weight	12.5 kDa (monomer, predicted), 12 kDa and 24 kDa (observed on SDS-PAGE gel stained using Coomassie® Blue under reducing and non-reducing conditions, respectively)
Formulation	Lyophilized from sterile Tris and NaCl with Trehalose, pH 7.5.

Storage and Preparation

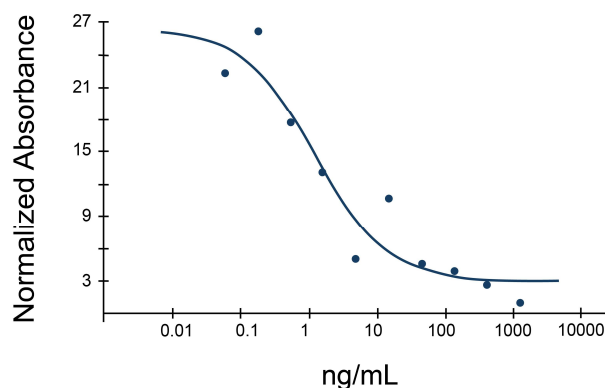
Shipping	Shipped at ambient temperature.
Stability and Storage	<ul style="list-style-type: none">12 months from date of receipt at -20°C to -70°C, lyophilized powder.3 months at -20°C to -70°C under sterile conditions after reconstitution. Avoid repeated freeze-thaw cycles.
Reconstitution	Reconstitute at 100 µg/mL in PBS.

Data Images



Recombinant Human GDF-15 (2 µg/lane) on SDS-PAGE under reducing (R) conditions. The gel was stained using Coomassie® Blue showing single bands at 12 kDa and 24 kDa, respectively, and purity greater than 98%.

Recombinant Human GDF-15



Determined by an alkaline phosphatase activity inhibition assay using mouse MC3T3-E1 cells. The ED₅₀ for this effect is typically <2 ng/mL.