

# Recombinant Human KGF/FGF-7 Protein

Catalog Number: EXRP015

**EXREprotein™**

[marketing@exreprotein.com](mailto:marketing@exreprotein.com)

For Research Use Only. Not Intended for Diagnostic or Therapeutic Use.

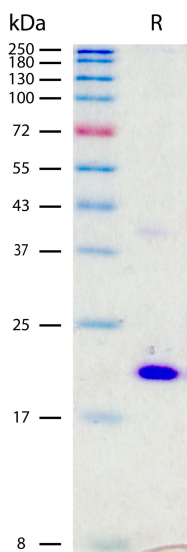
## Product Details

Biological Activity	Determined by a cell proliferation assay using 4MBr-5 rhesus monkey cells. The ED <sub>50</sub> for this effect is typically <3 ng/mL.
Purity	>97% by SDS-PAGE and quantitative densitometry by Coomassie® Blue staining
Endotoxin	<0.001 EU per 1 µg of the protein as determined by the LAL method
Source	Expressed in <i>E. coli</i> .
Accession Number	P21781
Sequence	Cys32-Thr194, with an N-terminal Met MCNDMTPEQM ATNVNCSSPE RHTRSVDYME GGDIVRRLF CRTQWYLRID KRGKVKGTQE MKNNYNIMEI RTVAVGIVAI KGVESEFYLA MNKEGKLYAK KECNEDCNFK ELILENHNT YASAKWTHNG GEMFVALNQG GIPVRGKGTK KEQKTAHFLP MAIT
Molecular Weight	19 kDa (monomer, predicted)
Formulation	Lyophilized from sterile PBS with Trehalose, pH 7.4

## Storage and Preparation

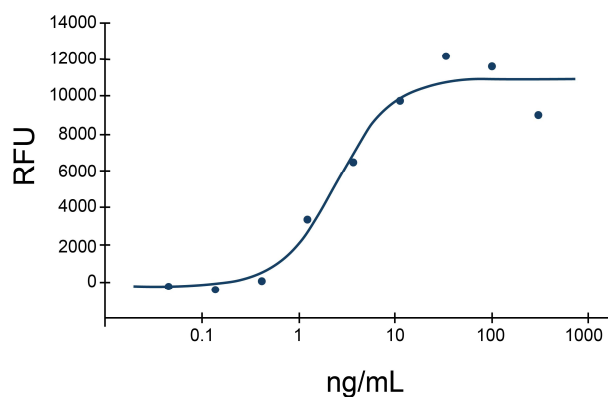
Shipping	Shipped at ambient temperature.
Stability and Storage	<ul style="list-style-type: none"><li>12 months from date of receipt at -20°C to -70°C, <b>lyophilized powder</b>.</li><li>3 months at -20°C to -70°C under sterile conditions <b>after reconstitution</b>.</li></ul> <b>Avoid repeated freeze-thaw cycles.</b>
Reconstitution	Reconstitute at 100 µg/mL in PBS.

## Data Images



Recombinant Human KGF/FGF-7 (2 µg/lane) on SDS-PAGE under reducing (R) conditions. The gel was stained using Coomassie® Blue showing a major band at 19 kDa and purity greater than >97%.

## Recombinant Human KGF/FGF-7



Determined by a cell proliferation assay using 4MBr-5 rhesus monkey cells. The ED<sub>50</sub> for this effect is typically <3 ng/mL.