

Recombinant Bovine Serum Albumin/BSA Protein

Catalog Number: EXRP053



For Research Use Only. Not Intended for Diagnostic or Therapeutic Use.

Product Details

Biological Activity	The carrier effect of Recombinant Bovine Serum Albumin/BSA was determined by enhancement of cell proliferation using TF-1 human cells. Stout, <i>et al.</i> (2022) Commun Biol 5 :466. Cell proliferation in TF-1 human cells was induced in a dose-dependent manner by either Recombinant Human GM-CSF or Recombinant Human IL-3 (Catalog # EXRP037) and demonstrated >25% enhancement in the presence of rBSA.
Purity	>98% by SDS-PAGE and quantitative densitometry by Coomassie® Blue staining
Endotoxin	<0.001 EU per 1 µg (<1 EU/mg) of the protein as determined by the LAL method
Source	Expressed in CHO cell line, with no Fetal Bovine Serum (FBS).
Accession Number	A0A140T897
Sequence	Asp25-Ala607 DTHKSEIAHR FKDLGEEHFK GLVLIAFSQY LQQCPFDEHV KLVNELTEFA KTCVADESHA GCEKSLHTLF GDELCKVASL RETYGDMADC CEKQEPERNE CFLSHKDDSP DLPKLPDPN TLCDEFKADE KKFVGKLYE IARRHPYFYA PELLYYANKY NGVFQECCQA EDKGACLLPK IETMREKVL TSSARQRLRCA SIQKFGERAL KAWSVARLSQ KFPKAEFVEV TKLVDTLTKV HKECCHGDL ECADDRADLA KYICDNQDTI SSKLKECCDK PLLEKSHCIA EVEKDAIPEN LPPLTADFAE DKDVCKNYQE AKDAFLGSFL YEYSRRHPEY AVSVLLRL AK EYEATLEECC AKDDPHACYS TVFDKLKHLV DEPQNLIKQN CDQFEKLGEY GFQNALIVRY TRKVPQVSTP TLVEVSRLG KVGTRCCTKP ESERMPCTED YLSLILNRLC VLHEKTPVSE KVTKCCTESL VNRPCFSAL TPDETYVPKA FDEKLFTFHA DICTLPDTEK QIKKQTALVE LLKHKPKATE EQLKTVMENF VAFVDKCCAA DDKEACFAVE GPKLVVSTQT ALA
Molecular Weight	66.5 kDa (monomer, predicted), 81 kDa (glycosylated, observed on SDS-PAGE gel stained with Coomassie® Blue under reducing conditions)
Formulation	Lyophilized from sterile PBS with Trehalose, pH 7.4

Storage and Preparation

Shipping	Shipped at ambient temperature.
Stability and Storage	<ul style="list-style-type: none">12 months from date of receipt at -20°C to -70°C, lyophilized powder.3 months at -20°C to -70°C under sterile conditions after reconstitution. Avoid repeated freeze-thaw cycles.
Reconstitution	Reconstitute at 1 mg/mL in sterile PBS.

Recombinant Bovine Serum Albumin/BSA Protein

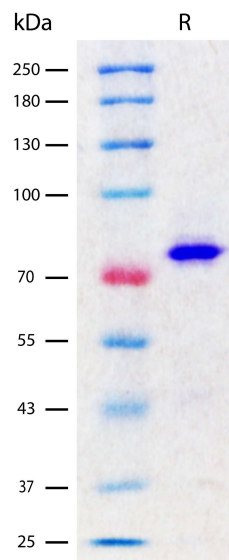
Catalog Number: EXRP053

EXREprotein™

info@exreprotein.com

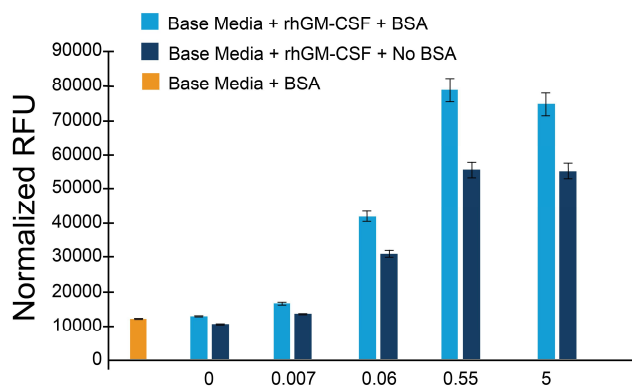
For Research Use Only. Not Intended for Diagnostic or Therapeutic Use.

Data Images



Recombinant Bovine Serum Albumin/BSA Protein (2 µg/lane) on SDS-PAGE under reducing (R) conditions. The gel was stained using Coomassie® Blue showing a single band at 81 kDa due to glycosylation and purity greater than 98%. Identity confirmed by polyclonal anti-BSA antibody in Western blot.

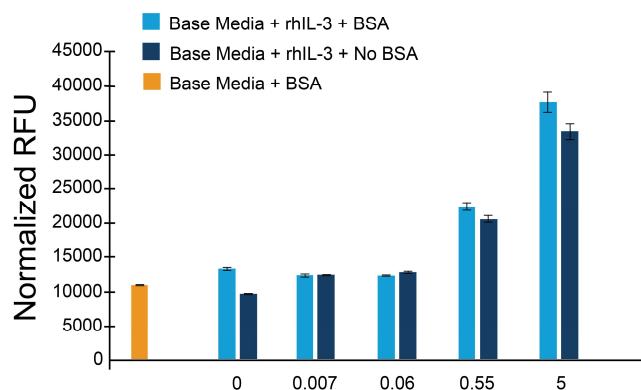
Carrier Effect of Bovine Serum Albumin



Recombinant Human GM-CSF (ng/mL)

Carrier effect of rBSA is observed in the cell proliferation in TF-1 human cells treated with Recombinant Human GM-CSF in the presence of 50 µg/mL rBSA. The carrier effect due to rBSA does not alter the ED₅₀ in this assay.

Carrier Effect of Bovine Serum Albumin



Recombinant Human IL-3 (ng/mL)

Carrier effect of rBSA is observed in the cell proliferation in TF-1 human cells treated with Recombinant Human IL-3 (Catalog # EXRP037) in the presence of 25 µg/mL rBSA. The carrier effect due to rBSA does not alter the ED₅₀ in this assay.