

Recombinant Human FGF-10 Protein

Catalog Number: EXRP005

EXREprotein™

For Research Use Only. Not Intended for Diagnostic or Therapeutic Use.

More information: marketing@exreprotein.com

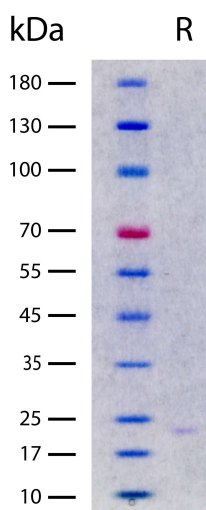
Product Details

Biological Activity	Determined by a cell proliferation assay using 4MBr-5 rhesus monkey cells. The ED ₅₀ for this effect is typically 10-75 ng/mL.
Purity	>95% by SDS-PAGE and quantitative densitometry by Coomassie® Blue staining
Endotoxin	<0.02 EU per 1 µg of the protein as determined by the LAL method
Source	Expressed in <i>E. coli</i> .
Accession Number	O15520
Sequence	Cys37-Ser208, with an N-terminal Met MCQALGQDMV SPEATNSSSS SFSSPSSAGR HVRSYNHLQG DVRWRKLFSE TKYFLKIEKN GKVSGETKEN CPYSILEITS VEIGVVAVKA INSNYYLAMN KKGKLYGSKE FNNDCKLKER IEENGYN TYA SFNWQHNGRQ MYVALNGKGA PRRGQKTRRK NTAHFLPMV VHS
Molecular Weight	19.6 kDa (predicted)
Formulation	Lyophilized from sterile PBS with Trehalose, DTT, and EDTA, pH 7.4

Storage and Preparation

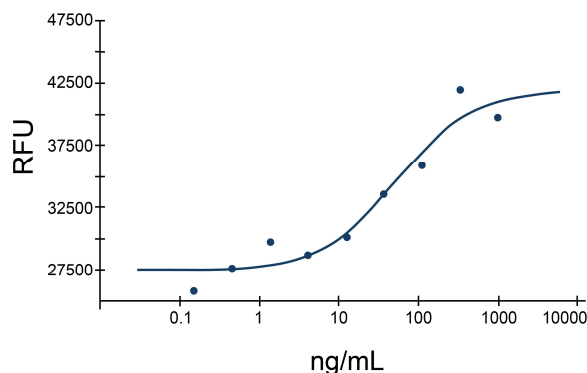
Shipping	Shipped at ambient temperature.
Stability and Storage	<ul style="list-style-type: none">12 months from date of receipt at -20°C to -70°C, lyophilized powder.3 months at -20°C to -70°C under sterile conditions after reconstitution. Avoid repeated freeze-thaw cycles.
Reconstitution	Reconstitute at 25 µg/mL in sterile PBS with 0.1% BSA.

Data Images



Recombinant Human FGF-10 (2 µg/lane) on SDS-PAGE under reducing (R) conditions. The gel was stained using Coomassie® Blue showing a single band at 20 kDa and purity greater than 95%. Note: Coomassie Blue staining with this protein is weaker than expected.

Recombinant Human FGF-10



Determined by a cell proliferation assay using 4MBr-5 rhesus monkey cells. The ED₅₀ for this effect is typically 10-75 ng/mL