

# Recombinant Human VEGF 165 Protein

Catalog Number: EXRP021

**EXREprotein™**

For Research Use Only. Not Intended for Diagnostic or Therapeutic Use.

More information: [marketing@exreprotein.com](mailto:marketing@exreprotein.com)

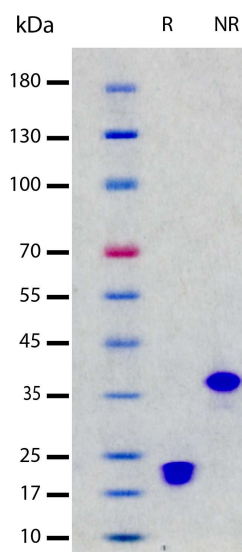
## Product Details

<b>Biological Activity</b>	Determined by a cell proliferation assay using HUVEC human umbilical vein endothelial cells. The ED <sub>50</sub> for this effect is typically 1-5 ng/mL.
<b>Purity</b>	>98% by SDS-PAGE and quantitative densitometry by Coomassie® Blue staining
<b>Endotoxin</b>	<0.001 EU per 1 µg (<1 EU/mg) of the protein as determined by the LAL method
<b>Source</b>	Expressed in <i>E. coli</i> . Disulfide-linked homodimer
<b>Accession Number</b>	NP_001165097.1
<b>Sequence</b>	Ala27-Arg191  APMAEGGGQN HHEVVKFMDV YQRSYCHPIE TLVDIFQEYP DEIEYIFKPS CVPLMRCGGC CNDEGLECVP TEESNITMQI MRIKPHQQQH IGEMSFLQHN KCECRPKKDR ARQENPCGPG SERRKHLFVQ DPQTCKCSCK NTDSRCKARQ LELNERTCRC DKPRR
<b>Molecular Weight</b>	19.2 kDa (monomer, predicted)
<b>Formulation</b>	Lyophilized from sterile HEPES and NaCl with Trehalose, pH 7.4

## Storage and Preparation

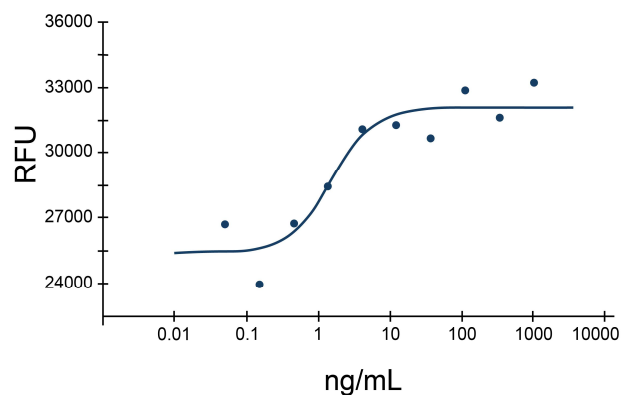
<b>Shipping</b>	Shipped at ambient temperature.
<b>Stability and Storage</b>	<ul style="list-style-type: none"><li>12 months from date of receipt at -20°C to -70°C, <b>lyophilized powder</b>.</li><li>3 months at -20°C to -70°C under sterile conditions <b>after reconstitution</b>.</li></ul> <b>Avoid repeated freeze-thaw cycles.</b>
<b>Reconstitution</b>	Reconstitute at 100 µg/mL in PBS.

## Data Images



Recombinant Human VEGF 165 (2 µg/lane) on SDS-PAGE under reducing (R) and non-reducing (NR) conditions. The gel was stained using Coomassie® Blue showing single bands at 20 kDa (R) and 39 kDa (NR), with purity greater than 98%.

## Recombinant Human VEGF 165



Determined by a cell proliferation assay using HUVEC human umbilical vein endothelial cells. The ED<sub>50</sub> for this effect is typically 1-5 ng/mL.