

Recombinant Mouse IL-6 Protein

Catalog Number: EXRP032

EXREprotein™

For Research Use Only. Not Intended for Diagnostic or Therapeutic Use.

More information: marketing@exreprotein.com

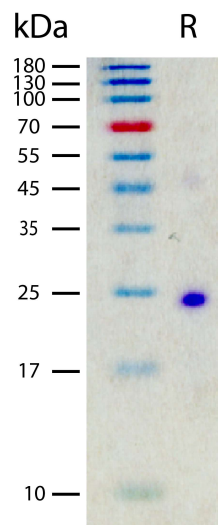
Product Details

Biological Activity	Determined by a cell proliferation assay using mouse B9 cells. The ED ₅₀ for this effect is typically 50-150 pg/mL.
Purity	>96% by SDS-PAGE and quantitative densitometry by Coomassie® Blue staining
Endotoxin	<0.02 EU per 1 µg of the protein as determined by the LAL method
Source	Expressed in <i>E. coli</i> .
Accession Number	P08505
Sequence	Phe25-Thr211, with an N-terminal Met MFPTSQVRRG DFTEDTPNR PVYTTSQVGG LITHVLWEIV EMRKELCNGN SDCMNNDDAL AENNLKLPEI QRNDGCYQTG YNQEICLLKI SSGLLEYHSY LEYMKNNLKD NKKDKARVLQ RDTETLIHIF NQEVKDLHKI VLPTPISNAL LDKLESQKE WLRTKTIQFI LKSLEEFLLKV TLRSTRQT
Molecular Weight	21.9 kDa (monomer, predicted)
Formulation	Lyophilized from sterile Sodium Acetate, pH 5.5, with Trehalose.

Storage and Preparation

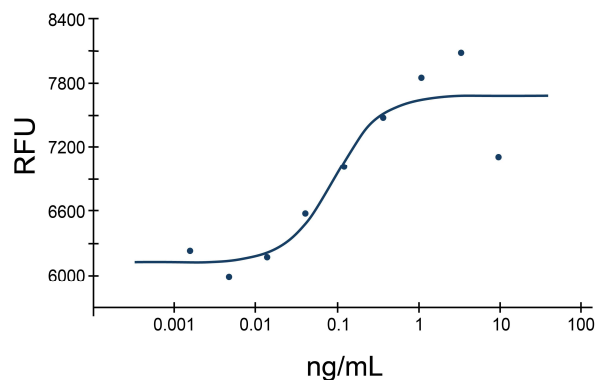
Shipping	Shipped at ambient temperature.
Stability and Storage	<ul style="list-style-type: none">12 months from date of receipt at -20°C to -70°C, lyophilized powder.3 months at -20°C to -70°C under sterile conditions after reconstitution. Avoid repeated freeze-thaw cycles.
Reconstitution	Reconstitute at 100 µg/mL in sterile 10 mM Acetic Acid.

Data Images



Recombinant Mouse IL-6 (2 µg/lane) on SDS-PAGE under reducing (R) conditions. The gel was stained using Coomassie® Blue showing a single band at 24 kDa and purity greater than 96%.

Recombinant Mouse IL-6



Determined by a cell proliferation assay using mouse B9 cells. The ED₅₀ for this effect is typically 50-150 pg/mL.