

# Recombinant Mouse M-CSF/CSF1 Protein

Catalog Number: EXRP001

**EXREprotein™**

For Research Use Only. Not Intended for Diagnostic or Therapeutic Use.

More information: [marketing@exreprotein.com](mailto:marketing@exreprotein.com)

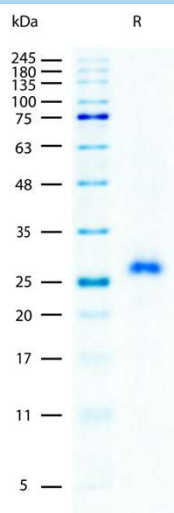
## Product Details

<b>Biological Activity</b>	Determined by a cell proliferation assay using mouse M-NFS-60 cells. The ED <sub>50</sub> for this effect is typically <10 ng/mL
<b>Purity</b>	>97% by SDS-PAGE and quantitative densitometry by Coomassie® Blue staining
<b>Endotoxin</b>	<0.002 EU per 1 µg of the protein as determined by the LAL method
<b>Source</b>	Expressed in <i>E. coli</i> . Disulfide-linked homodimer
<b>Accession Number</b>	Q3U4F9
<b>Sequence</b>	Lys33-Glu262, with an N-terminal Met  MKEVSEHCSH MIGNGHLKVL QQLIDSQMET SCQIAFEFVD QEQLDDPVCY LKKAFFLVQD IIDETMRFKD NTPNANATER LQELSNLNS CFTKDYEEQN KACVRTFHET PLQLLEKIKN FFNETKNLLE KDWNIFTKNC NNSFAKCSSR DVVTKPDCNC LYPKATPSSD PASASPHQPP APSMAPLAGL AWDDSQRTEG SLLPSELPL RIEDPGSAKQ RPPRSTCQTL E
<b>Molecular Weight</b>	26.1 kDa (monomer, predicted)
<b>Formulation</b>	Lyophilized from sterile PBS with Trehalose, pH7.4

## Storage and Preparation

<b>Shipping</b>	Shipped at ambient temperature.
<b>Stability and Storage</b>	<ul style="list-style-type: none"><li>12 months from date of receipt at -20°C to -70°C, <b>lyophilized powder</b>.</li><li>3 months at -20°C to -70°C under sterile conditions <b>after reconstitution</b>.</li></ul> <b>Avoid repeated freeze-thaw cycles.</b>
<b>Reconstitution</b>	Reconstitute at 100 µg/mL in PBS.

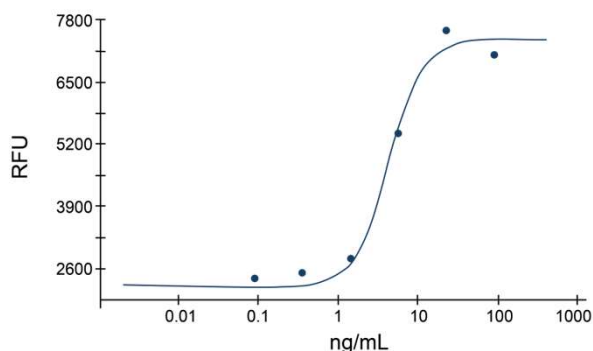
## Data Images



### SDS-PAGE Data, Recombinant Mouse M-CSF

Recombinant Mouse M-CSF(2 µg/lane) on SDS-PAGE under reducing (R) conditions. The gel was stained using Coomassie® Blue showing a single band at 26 kDa and purity greater than 97%.

### Recombinant Mouse M-CSF



Determined by a cell proliferation assay using mouse M-NFS-60 cells. The ED<sub>50</sub> for this effect is typically <10 ng/mL