

Recombinant Human IFN-gamma Protein

Catalog Number: EXRP027

EXREprotein™

marketing@exreprotein.com

For Research Use Only. Not Intended for Diagnostic or Therapeutic Use.

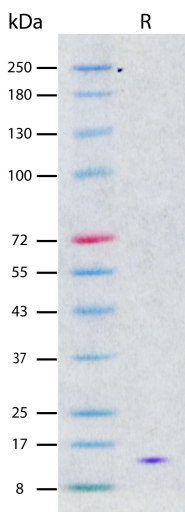
Product Details

Biological Activity	Determined by the ability to inhibit proliferation of HT-29 human cells. The ED ₅₀ for this effect is typically <0.75 ng/mL
Purity	>97% by SDS-PAGE and quantitative densitometry by Coomassie® Blue staining
Endotoxin	<0.01 EU per 1 µg of the protein as determined by the LAL method
Source	Expressed in <i>E. coli</i> .
Accession Number	CAA31639
Sequence	Gln24-Gln166, with an N-terminal Met MQDPYVKEAE NLKKYFNAGH SDVADNGTLF LGILKNWKEE SDRKIMQSQI VSFYFKLFKN FKDDQSIQKS VETIKEDMNV KFFNSNKKKR DDFEKL TNYS VTDLNVQRKA IHELIQVMAE LSPAAGTGKR KRSQMLFQGR RASQ
Molecular Weight	16.9 kDa (predicted)
Formulation	Lyophilized from sterile PBS with Trehalose, pH 7.4.

Storage and Preparation

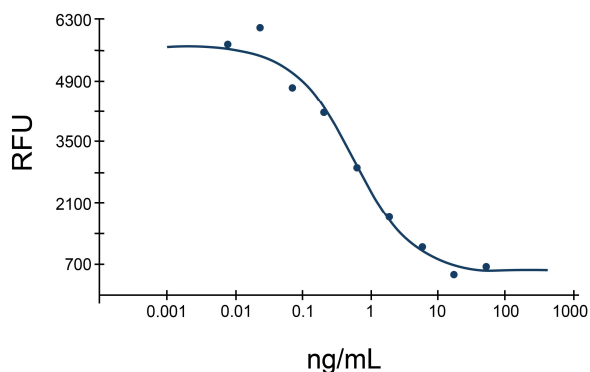
Shipping	Shipped at ambient temperature.
Stability and Storage	<ul style="list-style-type: none">12 months from date of receipt at -20°C to -70°C, lyophilized powder.3 months at -20°C to -70°C under sterile conditions after reconstitution. Avoid repeated freeze-thaw cycles.
Reconstitution	Reconstitute at 100 µg/mL in sterile, deionized water.

Data Images



Recombinant Human IFN-gamma (2 µg/lane) on SDS-PAGE under reducing (R) conditions. The gel was stained using Coomassie® Blue showing a single band at 16 kDa and purity greater than 97%.

Recombinant Human IFN-gamma



Determined by the ability to inhibit proliferation of HT-29 human cells. The ED₅₀ for this effect is typically <0.75 ng/mL.